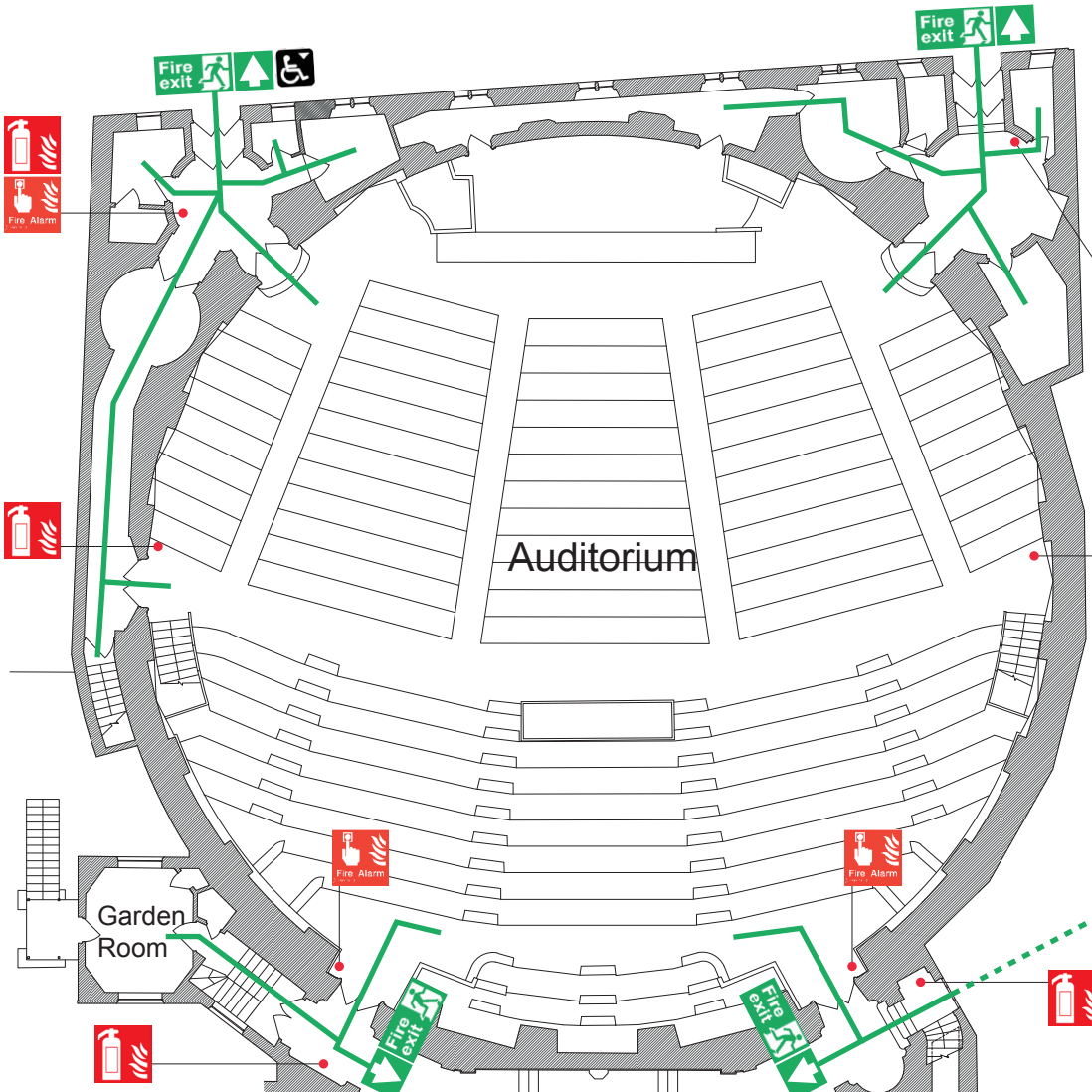


# FIRE ESCAPE PLAN

## Auditorium



### SAFETY NOTICES


**FIRE**

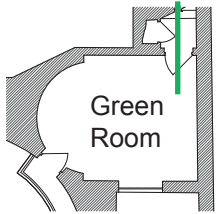
- Push the fire alarm button
- Dial 999
- Report your name and location
- Close windows and doors
- Proceed to the assembly point at:  
**Tufton Court,  
Tufton Street**

**EVACUATION**

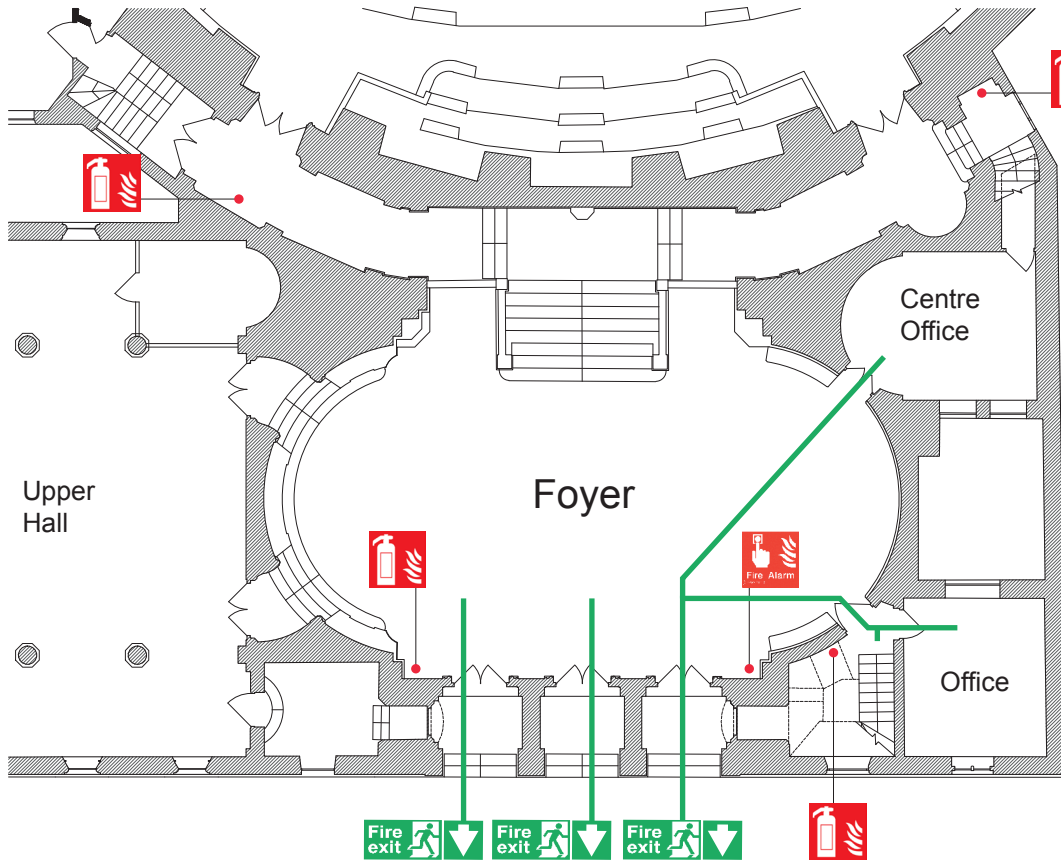
- Proceed directly to your assembly point
- DO NOT stop to collect personal belongings
- DO NOT use the lifts
- DO NOT re-enter the building until told it is safe to do so.

**LEGEND**

	Escape Route
	Fire Exit
	Fire Extinguisher
	Fire Alarm Call Point

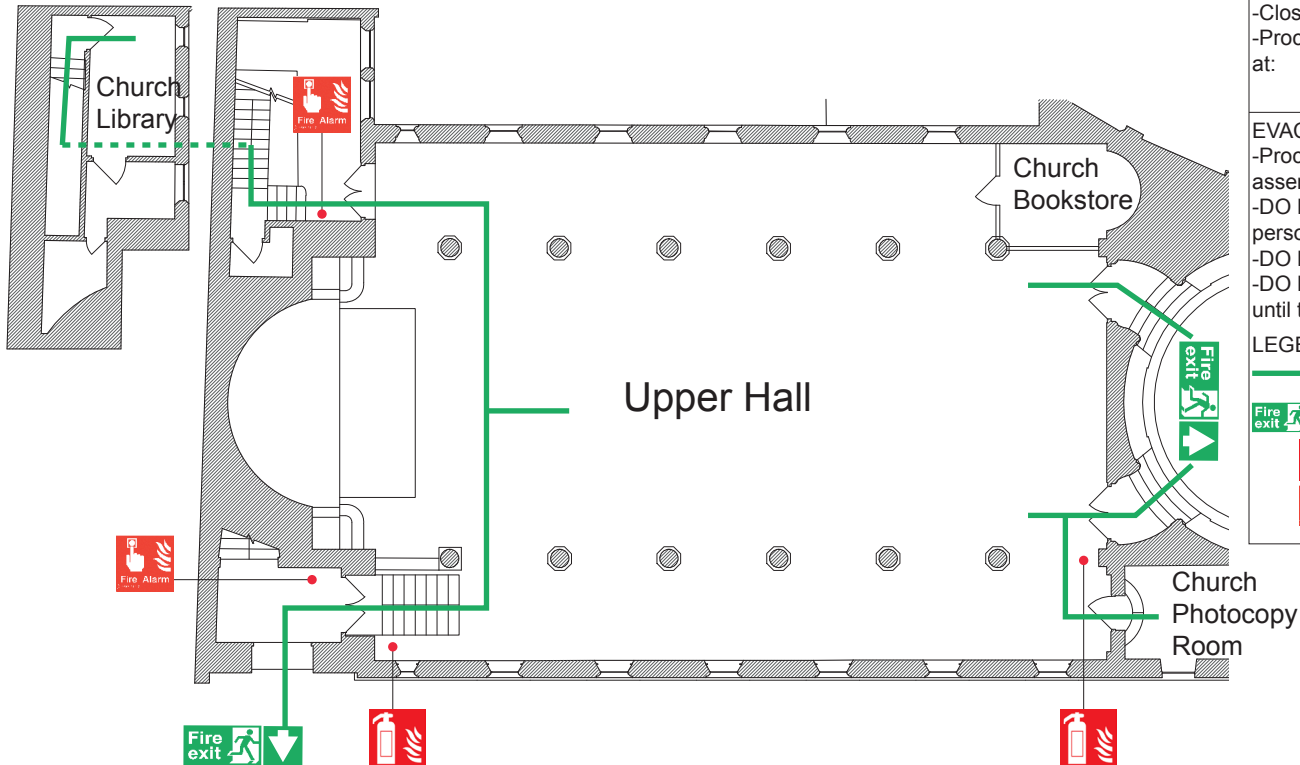






# FIRE ESCAPE PLAN Foyer



<b>SAFETY NOTICES</b>	
<b>FIRE</b>	
-Push the fire alarm button	
-Dial 999	
-Report your name and location	
-Close windows and doors	
-Proceed to the assembly point at: <b>Home Office, Marsham Street</b>	
<b>EVACUATION</b>	
-Proceed directly to your assembly point	
-DO NOT stop to collect personal belongings	
-DO NOT use the lifts	
-DO NOT re-enter the building until told it is safe to do so.	
<b>LEGEND</b>	
	Escape Route
	Fire Exit
	Fire Extinguisher
	Fire Alarm Call Point

# FIRE ESCAPE PLAN Upper Hall



<b>SAFETY NOTICES</b>	
<b>FIRE</b>	
-Push the fire alarm button	
-Dial 999	
-Report your name and location	
-Close windows and doors	
-Proceed to the assembly point at: <b>Home Office, Marsham Street</b>	
<b>EVACUATION</b>	
-Proceed directly to your assembly point	
-DO NOT stop to collect personal belongings	
-DO NOT use the lifts	
-DO NOT re-enter the building until told it is safe to do so.	
<b>LEGEND</b>	
	Escape Route
	Fire Exit
	Fire Extinguisher
	Fire Alarm Call Point

# FIRE ESCAPE PLAN

Board Room & Music Room

## SAFETY NOTICES

### FIRE

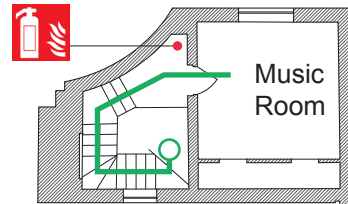
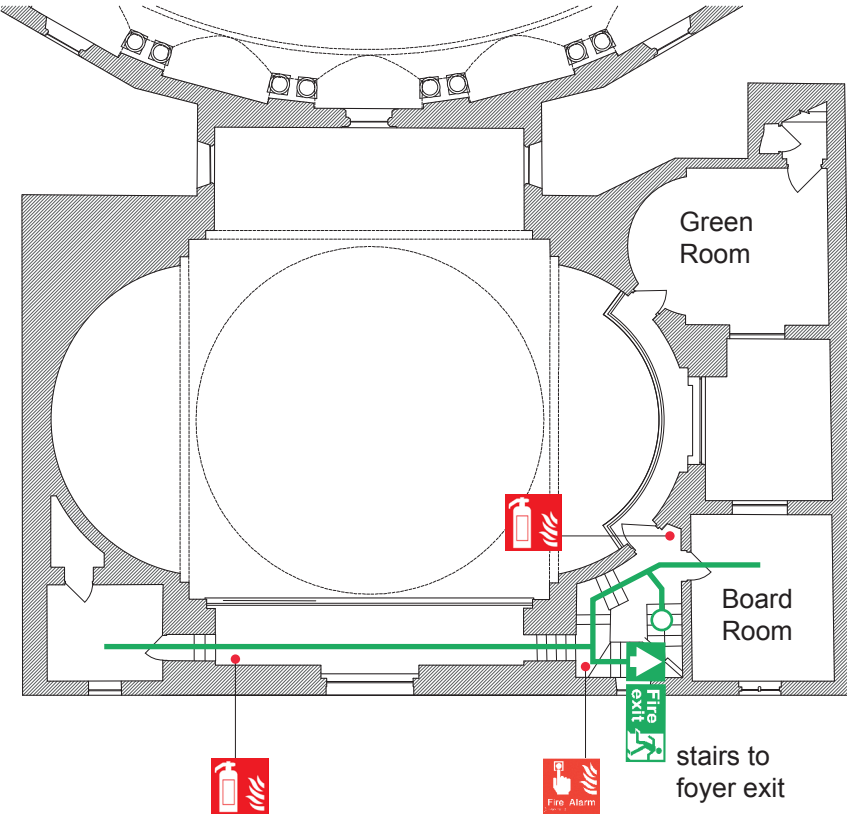
- Push the fire alarm button
- Dial 999
- Report your name and location
- Close windows and doors
- Proceed to the assembly point at: **Home Office, Marsham Street**

### EVACUATION

- Proceed directly to your assembly point
- DO NOT stop to collect personal belongings
- DO NOT use the lifts
- DO NOT re-enter the building until told it is safe to do so.

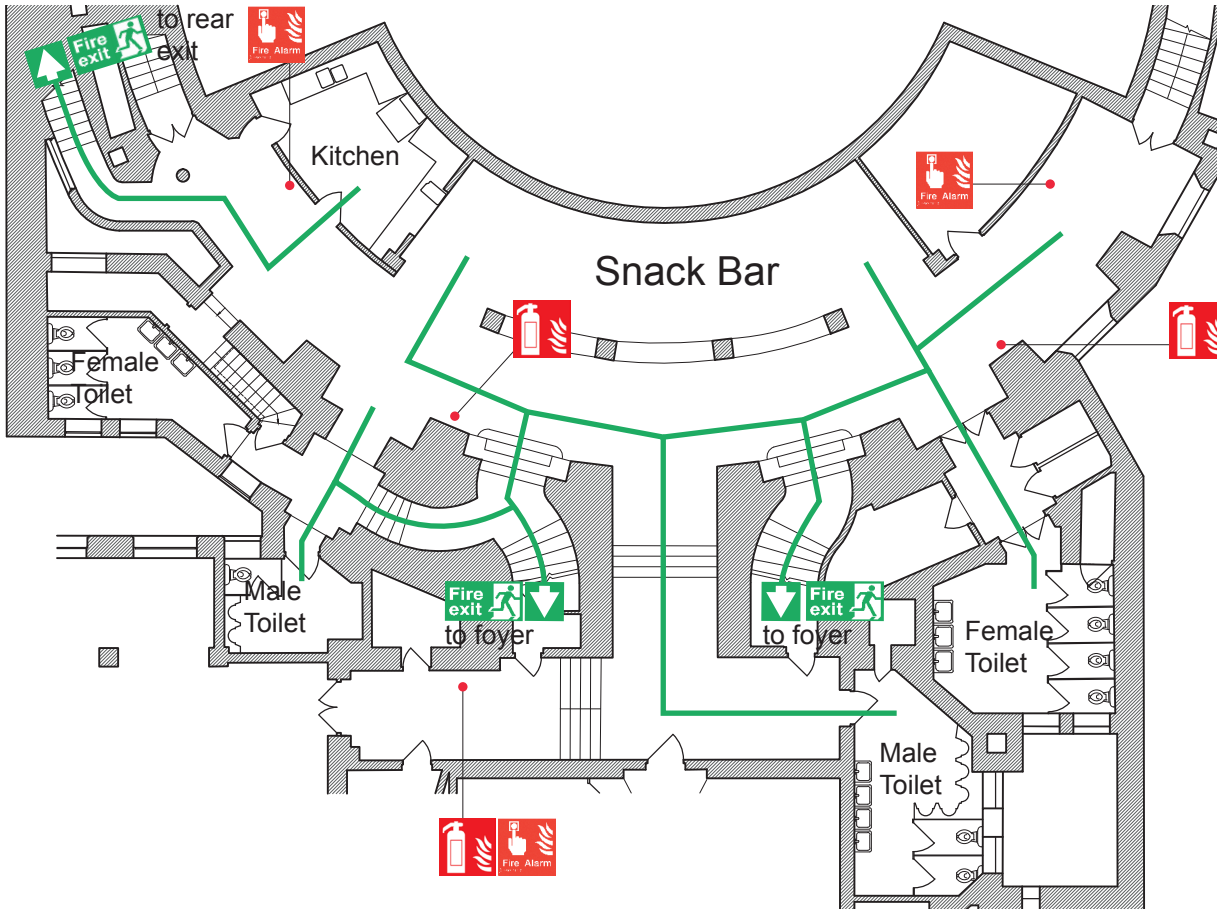
### LEGEND

-  Escape Route
-  Fire Exit
-  Fire Extinguisher
-  Fire Alarm Call Point



# FIRE ESCAPE PLAN

Snack Bar, Kitchen & Washrooms



## SAFETY NOTICES

### FIRE

- Push the fire alarm button
- Dial 999
- Report your name and location
- Close windows and doors
- Proceed to the assembly point at:  
**Home Office,  
Marsham Street**

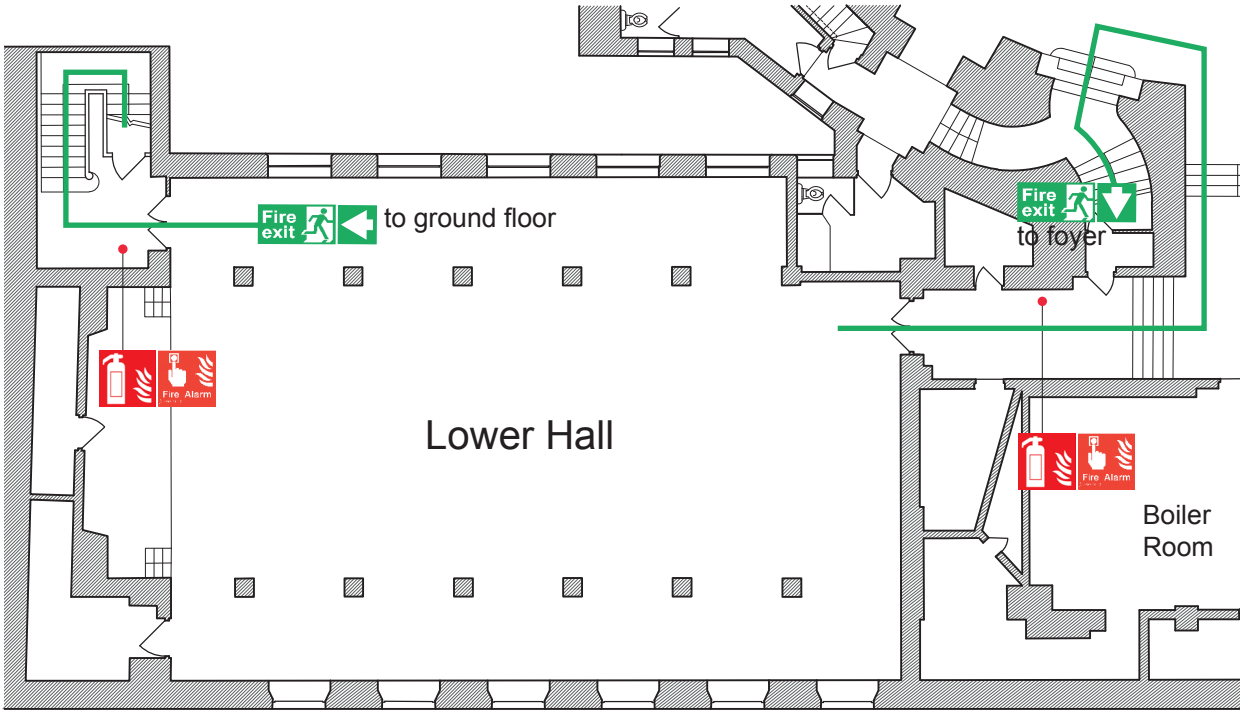
### EVACUATION

- Proceed directly to your assembly point
- DO NOT stop to collect personal belongings
- DO NOT use the lifts
- DO NOT re-enter the building until told it is safe to do so.

### LEGEND

-  Escape Route
-  Fire Exit
-  Fire Extinguisher
-  Fire Alarm Call Point

# FIRE ESCAPE PLAN Lower Hall



**SAFETY NOTICES**

**FIRE**

- Push the fire alarm button
- Dial 999
- Report your name and location
- Close windows and doors
- Proceed to the assembly point at: **Home Office, Marsham Street**

**EVACUATION**

- Proceed directly to your assembly point
- DO NOT stop to collect personal belongings
- DO NOT use the lifts
- DO NOT re-enter the building until told it is safe to do so.

**LEGEND**

- Escape Route
- Fire Exit
- Fire Extinguisher
- Fire Alarm Call Point